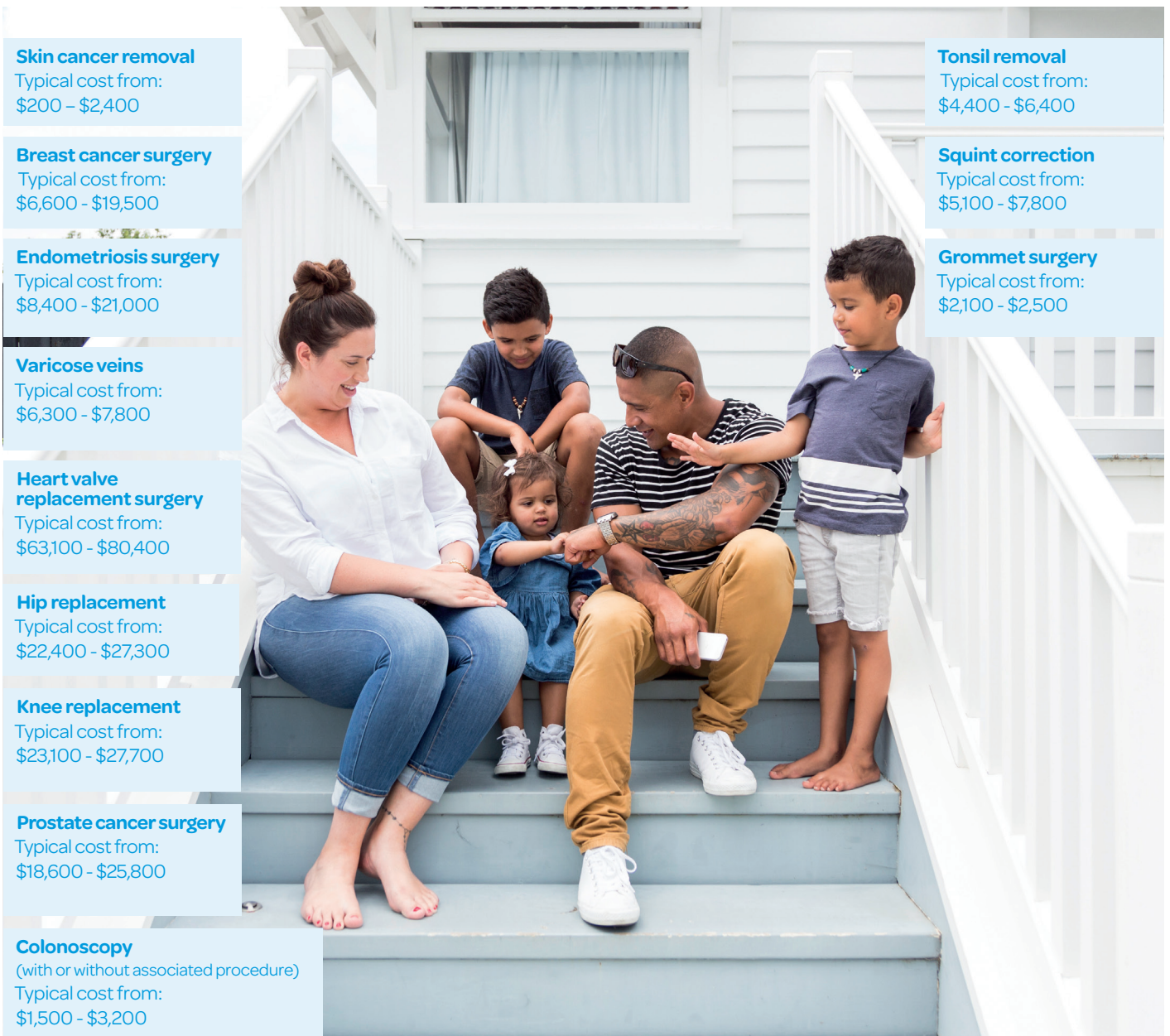


The real cost of healthcare in New Zealand

Typical costs of some common procedures!¹



¹All costs indicative and sourced from 2020/21 claims data.

This graphic is designed to show costs of some of the procedures covered. Not all benefits are available on all policies. For full details of the benefits and maximums for each policy and any eligibility criteria, exclusions, limitations or other conditions that may apply, please refer to the relevant policy document. In some cases, the listed procedures have been described in general rather than clinical terms. Procedure costs will vary depending on the location, medical practitioners, complications, and the medical procedure and technology used.