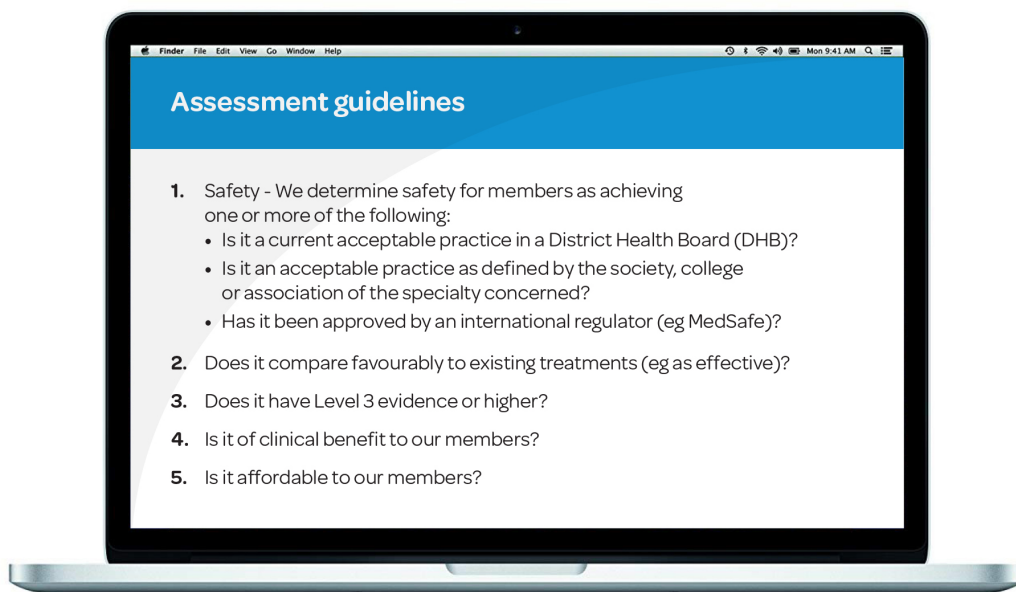


## Assessment guideline for cancer treatments

Reimbursement for cancer care will be within the specified policy limits. New approaches to the treatment of cancer are always being introduced. Novel treatments with radiotherapy, devices, and other technologies may be reimbursed if there is good evidence of a satisfactory safety and efficacy balance.

Efficacy will be primarily assessed by improved survival as compared with established treatments. If there is good evidence that a new technology is at least as effective as current treatments (not harmful) it may be reimbursed if it offers improved safety or is beneficial for daily life.

Technologies not meeting these levels of evidence will be regarded as developmental / experimental. A cost-benefit assessment will be undertaken if these levels of evidence are met.



## Assessment process



These are guidelines only. Ultimately Southern Cross has sole discretion as to whether it funds a new technique or technology and Southern Cross reserves the right to apply or amend these guidelines in its sole discretion.

Updated March 2019